

Kol. Opis

1 UPA 15-90



Paznja! Slika proizvoda se može razlikovati od stvarnog proizvoda

Proizvodni broj: [99538895](#)

Grundfos UPA 15-90 is a domestic booster designed for pressure boosting of drinking water supplied from an external source in residential homes. The UPA booster pumps increase the pressure of domestic water to make the required pressure available at showers, taps and other tapping points.

Duzina od ulaza do izlaza: This pump has an inlet and outlet port of 3/4. The pressure rating of the pump corresponds with PN 10 and a port-to-port length of 160 mm.

The UPA 15-90 provides the comfort of constant water pressure with automatic start and stop. This is controlled by the integrated flow switch ensuring optimal start/stop of the booster pump according to demand.

The design is robust and built upon corrosion-free materials and cataphoresis-coated cast iron pump housing to ensure a long lifetime.

The pump is a canned rotor pump type where pump and motor form an integral unit without shaft seal.

This pump must always be installed with horizontal motor shaft.

This booster has a 2-pole, asynchronous, squirrel-cage motor with built in impedance protection and short circuit proof.

The bearings are lubricated by the pumped liquid.

These constructional features ensure maintenance-free operation.

Odobrenja: The pump has the following approvals CE, WEEE-UPA, MORO.

- Integrated flow switch: Automatic start and stop according to demand
Low noise level
Easy installation: plug and pump compact inline booster
Integrated non-return valve
Improved corrosion resistance
Built in motor protection

Tečnost:

Dizana tečnost: voda

Raspon temperature tečnosti: 275 .. 368 K

Selected liquid temperature: 333 K

Gustina: 983.2 kg/m³

Tehnički:

TF klasa: 95

Saglasnosti na natpisnoj pločici: CE, WEEE-UPA, MORO

Materijali:

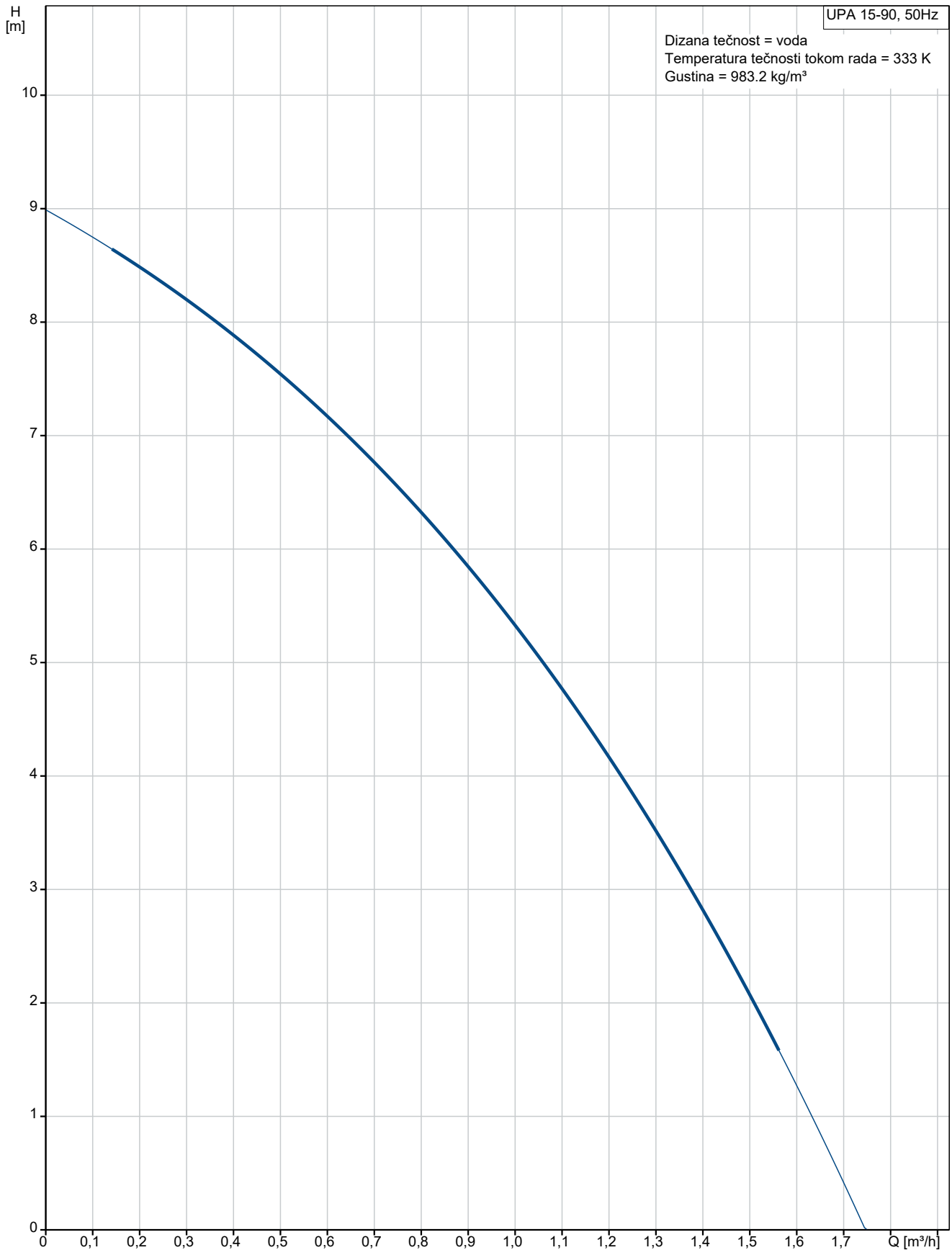
Kućište pumpe: Liveno gvožđe

Rotor: PP Kompozitno

Ugradnja:

Kol.	Opis
	Maximum ambient temperature: 313 K
	Maksimalni radni pritisak: 1000 kPa
	Type of connection: G
	Dimenzija izlaza pumpe: 3/4
	Pressure rating for connection: PN 10
	Dužina ugrađivanja: 160 mm
	Elektro podaci:
	Max. ulazna snaga: 120 W
	Frekvencija struje: 50 Hz
	Potrebni napon: 1 x 230 V
	Utrošak struje u brzini 3: 0.48 A
	Veličina kondenzatora - radni: 2.5 µF
	Klasa zaštite (IEC 34-5): X2D
	Klasa izolacije (IEC 85): H
	Power plug: Šuko utikač
	Ostali:
	Bruto masa: 3.77 kg
	Transportna zapremina: 0.004 m ³
	Country of origin: CN
	Custom tariff no.: 84137030

99538895 UPA 15-90 50 Hz



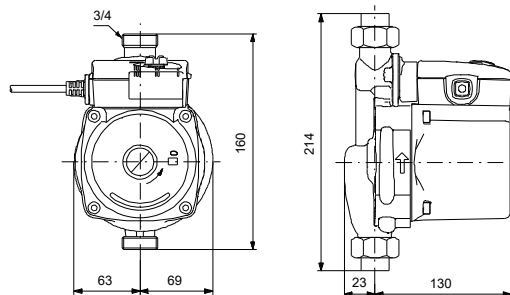
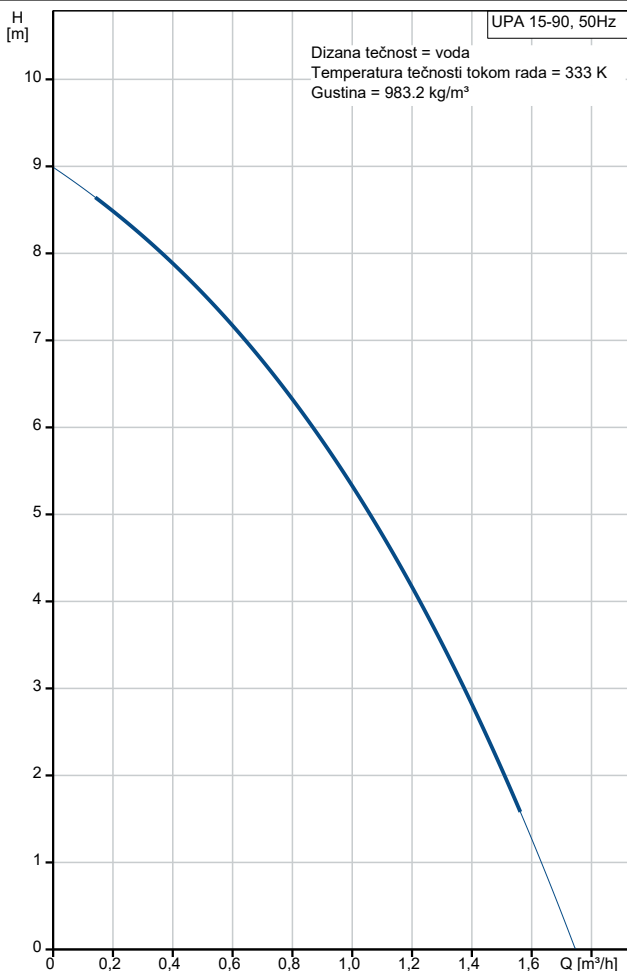
Naziv firme:

Napravio:

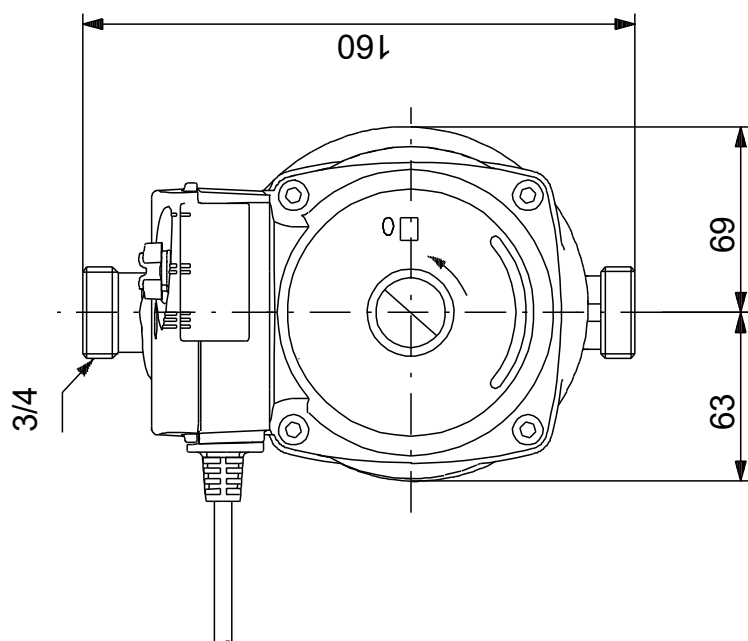
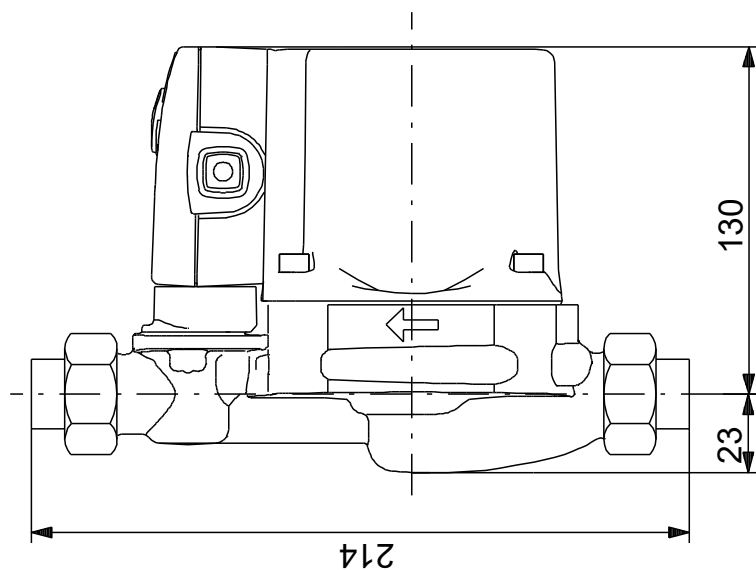
Telefon:

Datum: 14.4.2021.

Opis	Vrednost
Opšte informacije:	
Ime proizvoda::	UPA 15-90
Šifra proizvoda:	99538895
EAN broj::	5713830738429
Cena:	€ 107.89
Tehnički:	
Broj brzina:	1
Visina max.:	9 m
TF klasa:	95
Saglasnosti na natpisnoj pločici:	CE,WEEE-UPA,MORO
Materijali:	
Kućište pumpe:	Liveno gvožđe
Rotor:	PP Kompozitno
Ugradnja:	
Maximum ambient temperature:	313 K
Maksimalni radni pritisak:	1000 kPa
Type of connection:	G
Dimenzija izlaza pumpe:	3/4
Pressure rating for connection:	PN 10
Dužina ugrađivanja:	160 mm
Tečnost:	
Dizana tečnost:	voda
Raspon temperature tečnosti:	275 .. 368 K
Selected liquid temperature:	333 K
Gustina:	983.2 kg/m ³
Elektro podaci:	
Max. ulazna snaga:	120 W
Frekvencija struje:	50 Hz
Potrebni napon:	1 x 230 V
Utrošak struje u brzini 3:	0.48 A
Veličina kondenzatora - radni:	2.5 µF
Klasa zaštite (IEC 34-5):	X2D
Klasa izolacije (IEC 85):	H
Zaštita motora:	NEMA
Termička zaštita:	Impedansna zaštita
Power plug:	Šuko utikač
Ostali:	
Bruto masa:	3.77 kg
Transportna zapremina:	0.004 m ³
Country of origin:	CN
Custom tariff no.:	84137030



99538895 UPA 15-90 50 Hz



Napomena! Sve jedinice su u [mm]ukoliko drugačije nije navedeno.
Upozorenje: Ovaj pojednostavljeni dimenzioni crtež ne pokazuje sve detalje.